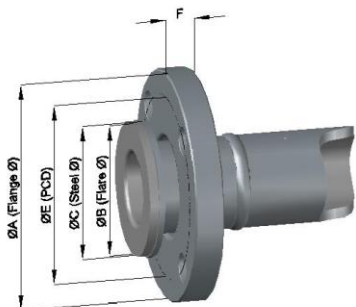


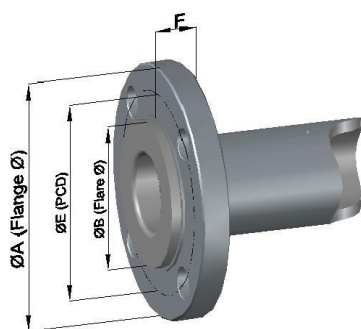
ANSI 150 FLANGES & PIPE SPOOL

CONRAC & STUB END

FLANGE



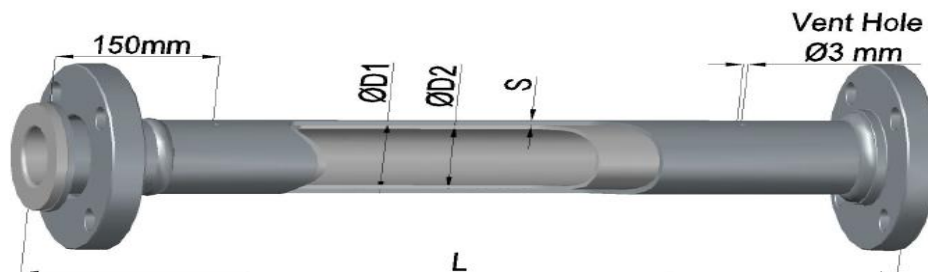
FIXED FLANGE



Pictures for illustration only, type of steel fabrication varies

NB #150	A	B	C	D	E	F	Holes		Thd
	mm	mm	mm	mm	mm	mm	#	Ø	UNC
½"	89	32		42	60.3	11.1	4	16	½"
¾"	99	40		52	69.0	12.7	4	16	½"
1"	108	48	51	60	79.4	14.3	4	16	½"
1½"	127	69	72	73	98.4	17.5	4	16	½"
2"	152	88	90	92	120.6	19.0	4	20	5/8"
3"	191	118	125	127	152.4	23.8	4	20	5/8"
4"	229	151	155	157	190.5	23.8	8	20	5/8"
6"	279	204		216	241.3	25.4	8	23	¾"
8"	343	256		270	298.4	28.6	8	23	¾"
10"	406	312		324	361.9	30.2	12	26	7/8"
12"	493	366		381	431.8	32.7	12	26	7/8"

PIPE SPOOL



NB #150	L min		L Max	D1	D2	S	Wt	Flg Wt (Pair) kg	
	Fix/Lse	Conrac	mm	mm	mm	mm	kg/m	Fix/Lse	Stb-End
½"	90		6000	26.7	20.9	3.1	2	1.3	
¾"	90		6000	26.7	20.9	3.1	2	1.3	
1"	90	85	6000	33.4	26.6	3.1	2	2.1	1.8
1½"	110	85	6000	48.3	40.9	3.3	5	3.2	3.0
2"	120	105	6000	60.3	52.5	3.3	7	5.1	4.7
3"	140	160	6000	88.9	77.9	3.2	14	9.3	8.8
4"	150	170	6000	114.3	102.3	4.0	19	12.9	12.1
6"	160		6000	168.3	154.1	7.2	34	17.8	
8"	180		6000	219.1	202.7	8.2	53	28.2	
10"	210		6000	273.0	257.5	7.0	64	38.5	
12"	230		3000	323.8	307.0	10	65	60.9	